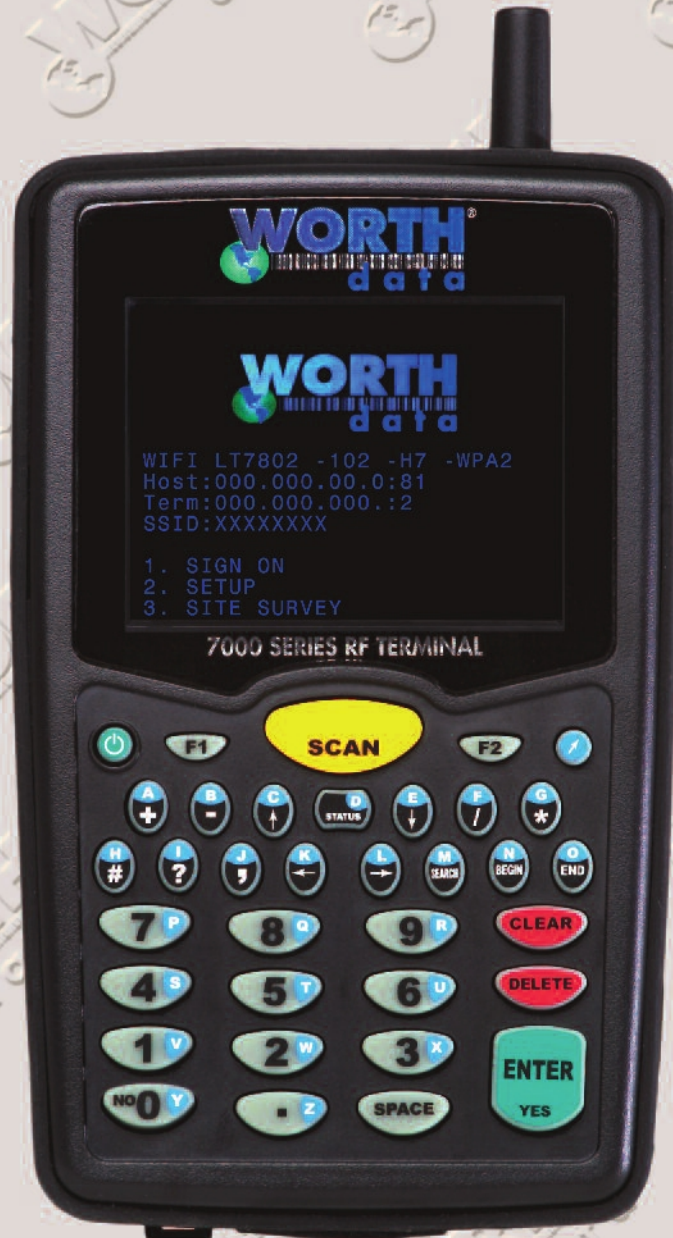


# 7802 WiFi Terminal

Portable WiFi Data Collection Terminal



Worth Data®

7800 Series

Host Controlled

WiFi Terminal System



[www.worthdata.com](http://www.worthdata.com)

Copyright © 2011 Worth Data, Inc.

## Quick Start Guide

# Table of Contents

<b>Chapter 1: Basic Terminal Setup</b> .....	<b>3</b>
Using the Setup Menu on the RF Terminal.....	3
Wi-Fi Configuration.....	3
Access Point Configuration.....	3
“Cloud” vs. “Local” Test Server Layouts.....	4
<b>Chapter 2: Using Web-Based “Cloud” Test Server</b> .....	<b>5</b>
<b>Chapter 3: Using Local (ActiveX) Test Server</b> .....	<b>7</b>
Install Local Test Server.....	7
How To Use Local Test Server.....	9

# Chapter 1: Basic Terminal Setup

---

The Wi-Fi RF Terminal can be configured using the Wi-Fi RF Terminal Setup menu. Most users do not need to change anything in the setup except for the Wi-Fi settings.

## Using the Setup Menu on the RF Terminal

The Wi-Fi RF Terminal can be setup via the Terminals' keypad by entering *Setup* from the menu.

1. - SIGN ON
2. - SETUP
3. - SITE SURVEY

Press the **2** key. The next menu allows you to choose which item to configure:

Wi-Fi TERMINAL SETUP	
Wi-Fi CONFIGURATION	1
BAR CODE OPTIONS	2
RS-232 I/O SETTINGS	3
DATE & TIME SETTINGS	4
SPEAKER SETTINGS	5
LASER SETTINGS	6
LCD SETTINGS	7
OTHER SETTINGS	8
SYSTEM TOOLS	9
DONE/EXIT	0

Press the **1** key. The next menu allows you to choose which item to configure:

## **Wi-Fi Configuration**

Under Wi-Fi Configuration there are three options:

Wi-Fi CONFIGURATION	
TERMINAL CONFIGURATION	1
ACCESS POINT CONFIG	2
CONNECTION HOST CONFIG	3

Press the **2** key. The next menu allows you to choose which item to configure:

## Access Point Configuration

Host IP Address	000.000.000.000
• NOT USED.	
Host Port Number	0
• NOT USED.	
SSID	<blank>

- Set the SSID to match the SSID of the network that the Wi-Fi RF Terminal will be connected to. You can use the **SITE SURVEY** command at the opening screen to find the SSID of Wi-Fi networks that are in range. When setting the SSID the cursor will change to a white box. Press the light blue shift key to enter upper-case alpha characters. Press the F2 to toggle upper and lower-case entry. The red cursor is for upper-case, the yellow cursor is for lower-case and the white cursor is for non-shifted characters from the number pad.

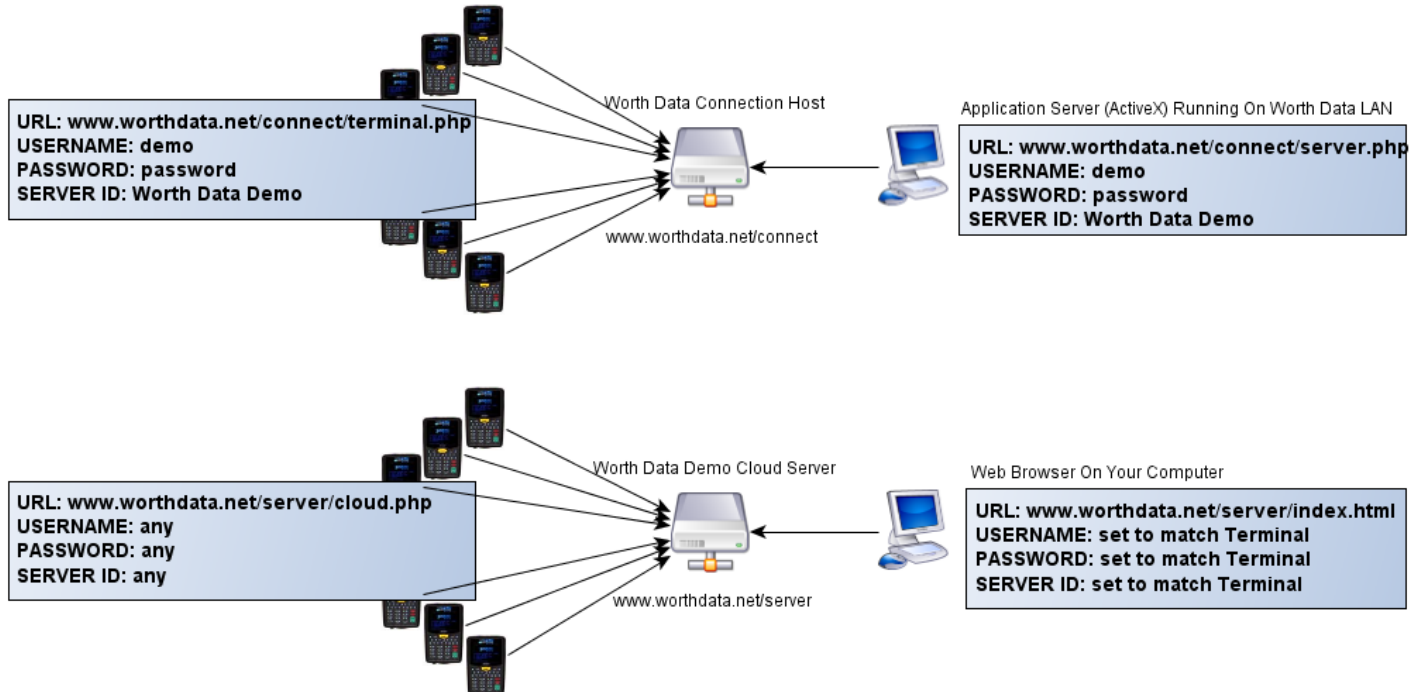
**SECURITY** **NONE**  
 WEP-128  
 WPA1-PSK-TKIP  
 WPA-PSK (mixed WPA1 and WPA2)  
 WPA2-PSK-AES

- The Security type must match the security set in the APs that the Wi-Fi RF Terminal will be communicating with. The default is no security. WEP-128 only supports Open System Authentication. Pressing the 4 key will toggle through the available choices. WPA1 and WPA2 are the most common types.

**KEY/PHRASE** **<blank>**

- The security key or pass phrase must match the Wi-Fi network that the Wi-Fi RF Terminal will be operating on and the Security type selected above. For WEP-128 enter the hex key. For WPA enter the pass phrase.

## “Cloud” vs. “Local” Test Server Layouts



## Chapter 2: Using Web-Based “Cloud” Test Server

---

Your terminal comes configured by default to access Worth Data's Cloud Test Server. Of course, you must first configure your Terminal to connect with an access point on your LAN.

See the chapter on RF System Setup to configure the Terminal to connect to your access point. The settings that determine what server you use that are pre-configured are in

SETUP → WIFI CONFIGURATION → CONNECTION HOST CONFIG

Once you have an internet connection with your Terminal, all you have to do is SIGN ON. When you do, assuming everything is working properly with your Terminal, you will see a prompt

Scan Item:

Key or scan some data. Press enter and you will see the next prompt

Enter Quantity:

These prompts repeat. Collect as much data as you desire.

Now go to your web browser and point it to

[www.worthdata.net/server](http://www.worthdata.net/server)

Enter the same keys (username, password, serverID) that are set in your Terminal's CONNECTION HOST CONFIG. If you have left these settings at default they are

USERNAME: demo  
PASSWORD: password  
SERVER ID: Worth Data Demo

## Welcome to Worth Data's 7802 WiFi Terminal Demonstration and Testing Server

This Server provides

1. A Connection Host for your applications using our ActiveX control running on your computer
2. A demonstration "Cloud" server that you can use to test your installation or as a template for building your own Server
3. This page that gives you access to downloading data collected using the demo Cloud Server

See the "RF 7802 Manual" for more information on using our Connection Host (or installing your own); the ActiveX control; and the Cloud Server (or installing your own).

---

### **Cloud Server Data**

To use the Cloud Server, you must first configure your Terminal to have Internet access. Consult your manual to see how to do this.

Once you have set up your Terminal, just sign-in with the default "Connection Host" settings and you will be using our Cloud Server.

Keep in mind that data is stored and accessed off the Server based on the "username", "server ID", "password" combination you have set in the Terminal.

If you want privacy, and to not see other users' demo data, change your username/serverID/password combination in your Terminal and enter matching keys here to access your data.

### **Enter values that match your Terminal Setup to download data for Excel:**

Enter Server ID:

Enter Username:

Enter Password:

Delete data on Server after export:  (Enter "yes" to delete all data that matches above keys)

Download complete source code for this demonstration "Cloud Server" [HERE](#)

Click on the "Export To Excel" button to download the data you just collected directly into Excel running on your computer.

# Chapter 3: Using Local (ActiveX) Test Server

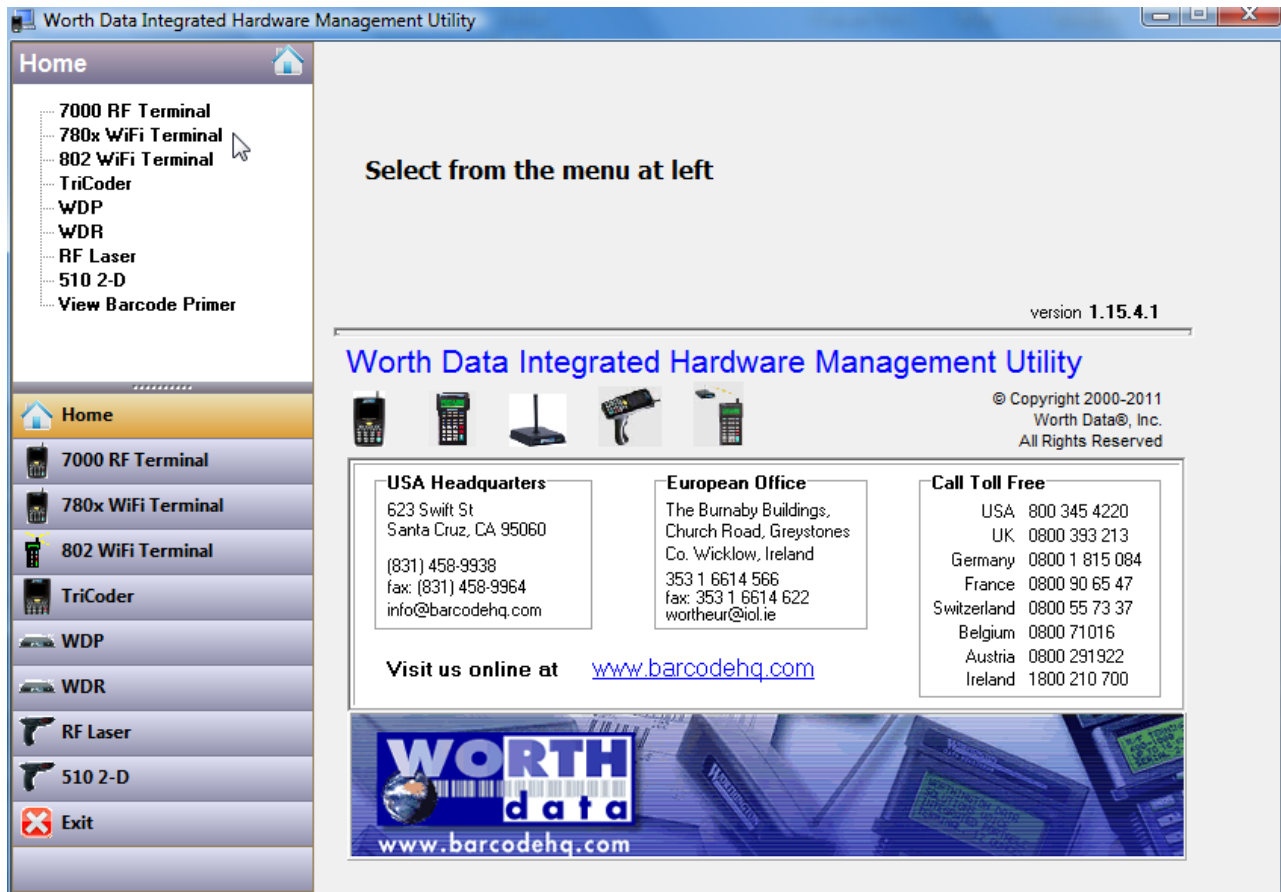
## Install Local Test Server

When you install the Integrated Utilities on your computer (on your CD or download from [www.barcodehq.com](http://www.barcodehq.com)), the Test Application Server is installed on your computer along with the ActiveX programming tool for creating your own Application Server.

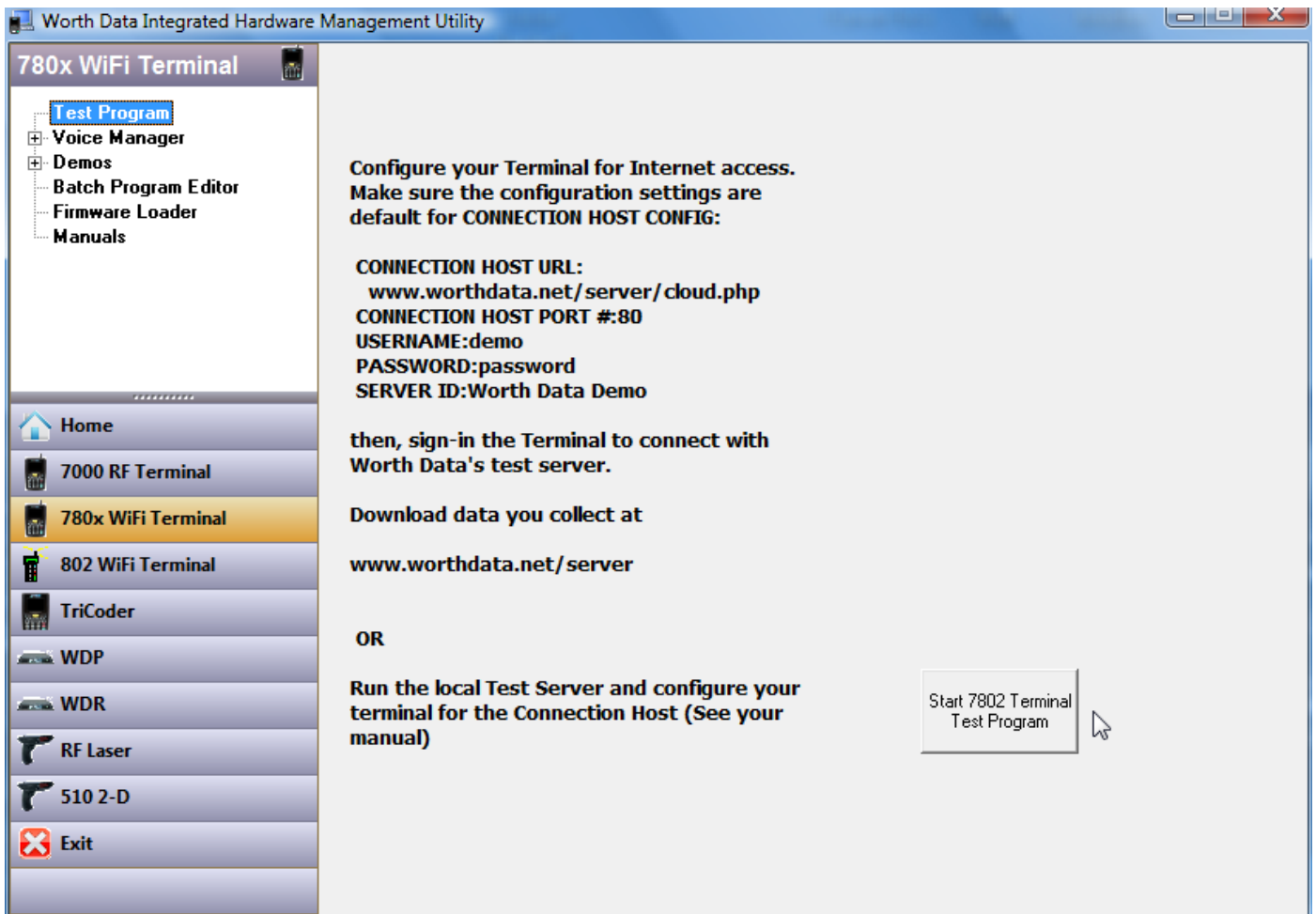
Click on your Windows Start button and find the Hardware Utilities Program in

Programs/Worth Data Hardware/Hardware Utilities

Select the “780x WiFi Terminal” from the menu on the left.

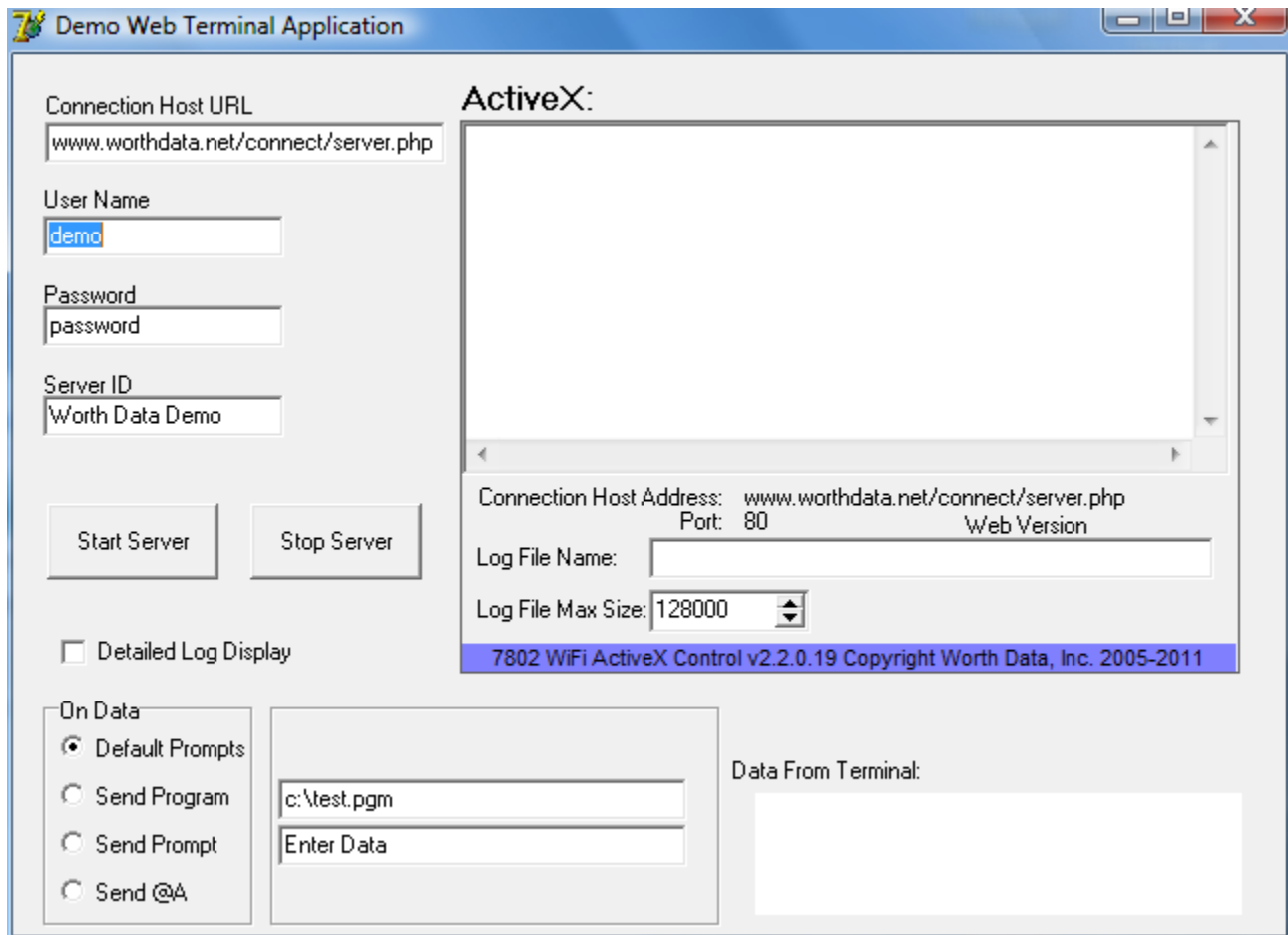


Select "Test Program" at the upper-left



Click on the button for "Start 7802 Terminal Test Program"

## How To Use Local Test Server



When you start the Test Server, you will see that it has a number of setup options

Connection Host URL  
User Name  
Password  
Server ID

as well as some options for “On Data” and “Log Display”.

Refer to the Manual for details on these options.

### **Server Setup: User Name**

For now, all you need to do is enter something unique and easy to remember here. Your name is good. Or try your email address. You will exactly what you enter here in a moment to setup the Terminal.

### **Server Setup: On Data**

This is a set of options that allow you see how some of the Terminal's features work. For example. If you have used the Batch Program Editor to create a Batch Program File, you can instruct the Server to send the Batch Program (enter the file name in the box to the right of “Send Program”) instead of a prompt when a Terminal signs-in or sends data.

There is also an option to send a custom prompt (enter it in the box to the right of “Send Prompt”) or to send a “@A” which is how you respond to receiving Batch data to tell the Terminal to continue running its existing Batch program.

Leave this setting at default for now.

### **Terminal Setup: Connection Host URL**

Your Terminal is shipped to you with default settings that will allow it to connect to the Test Server running on Worth Data's web site. This is actually a simple “Cloud Server”. If you want your Terminal to use a Connection Host and the Local Test Server instead, you must change the Connection Host URL

Follow the menu on your Terminal screen:

```
SETUP
WIFI CONFIGURATION
CONNECTION HOST CONFIG
```

Enter the same URL as you did in *Server Setup* above except **change *server.php* to *terminal.php***:

***www.worthdata.net/connect/terminal.php***

### **Terminal Setup: User Name, Password, Server ID**

Follow the menu on your Terminal screen:

```
SETUP
WIFI CONFIGURATION
CONNECTION HOST CONFIG
```

Enter exactly the same settings here as your did above for the Server.

### **Start the System**

Run your local Test Server. Make sure the settings are correct and click on the “Start” button.

The Test Server then attempts to evaluate its link with the Connection Host, and you will see a count-down displayed on the log.

Initializing Server in 5 Seconds...

If there is a problem, you will see an error message. Once the Server connects with the Connection Host, you will see.

Application Server started successfully

Once you have successfully started your Application Server, now it is time to sign-on a Terminal.