



LZ400RF B78 RF Laser Specifications

Model	Description	Interface	Cables
-------	-------------	-----------	--------

LZ400-RF	RF Laser Scanner	B78 RF Base Station	F10 Power Supply for Recharging
B78	RF Base Station	USB HID Keyboard or Serial RS-232	C21 USB Cable, F36 9 pin PC serial cable, F34 25 pin PC serial cable, F45 Dual Port Serial Y Cable

Operational

Light Source	650 nm Class II Laser Diode
Scan Speed	104 scans/sec Bidirectional
Scan Angle	47° ± 3°
Minimum Bar Width	2.3mil
Print Contrast	20% minimum reflectance differential
Indicators (LED)	Tri-Color LED
Beeper Operation	Confirming Beeps for Successful Decodes and for Successful RF Transmission
Bar Codes Supported	Code 39, Full ASCII Code 39, UPC-A, UPC-E, EAN-13, EAN-8, ISBN, Code 93, 2 of 5 Standard, Interleaved 2 of 5, Codabar, Code 128, UCC/EAN 128, MSI, Plessey, RSS-14
Base Station Interfaces	USB HID Keyboard or RS-232 Serial
Multiple Scanner Support	B78 Base Station - up to (10) LZ400-RF Lasers may communicate with (1) B78 Base Station
Radio Frequency	902-928 Mhz 18.4mw Spread Spectrum Radio

Physical

Height	Laser: 5.6" (142mm)	Base: 1.3" (33mm)
Depth	Laser: 4.7" (119mm)	Base: 6.75" (171mm)
Width	Laser: 3.1" (79mm)	Base: 5.1" (131mm)
Weight	Laser: 8.8 oz - 249g	Base: 9.5 oz - 270g
Cable for Base Station	C21 USB Cable, F34 9 pin Serial Cable, F36 25 pin Serial Cable, F45 Dual Port Serial Y Cable	
RF Transmission Range	Up to 500ft from Laser to Base	

Power

Input Voltage	5VDC ± 10% (Use Worth Data F10 Power Supply)
Battery	2100mAh Rechargeable 3.7V Li-Ion
Battery Life	48 Hours Continuous Use or 25,000 Scans Per Charge
Recharge Time	3 Hours (Indicated by Red LED)
Laser Class	CDRH class II / IEC class 2
FCC Class B	FCC ID: JWSLZ400RF, JWSB78 IC: 4724A-LZ400RF

Environmental

Operating Temperature	14°F to 122°F (0°C to 50°C)
Storage Temperature	-4°F to 140°F (-20°C to 60°C)
Humidity	5% to 95% non-condensing
Ambient Light Immunity	Sunlight: 10,000 ft. candles - Indoor: 450 ft. candles
Shock	6' drop to concrete
Warranty	2 Years - Parts & Labor

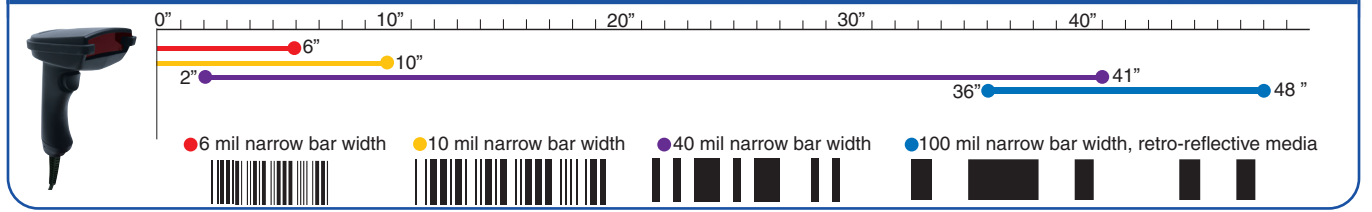
B78 RF Base Station F10 Power Supply for Recharging
USB HID Keyboard or Serial RS-232 C21 USB Cable, F36 9 pin PC serial cable, F34 25 pin PC serial cable, F45 Dual Port Serial Y Cable



CAUTION
 LASER LIGHT WHEN OPEN
 DO NOT STARE INTO BEAM
 CLASS II LASER PRODUCT
 IEC CLASS 2 LASER PRODUCT
 680 nm LASER • 1.0 MILLIWATT MAX OUTPUT

COMPLIES WITH US DHS 21 CFR 1040.10 SUBCHAPTER J AND IEC 925-1:1993/EN60825. ACHTUNG LASERSTRAHL. LASERKLASSE 2. NICHT IN DEN STRAHL BLICKEN. LUMIERE LASER - NE PAS REGARDER DANS LE FAISCEAU APPAREL A LASER DE CLASSE 2. WORTH DATA INC. • SANTA CRUZ, CA

Scan Range for LZ400-RF



Worth Data Inc. USA
 623 Swift St.
 Santa Cruz, CA 95060
 tel. 800-345-4220
 fax. 831-458-9964

Worth Data Inc. Europe
 21-23 Fenian Street
 Dublin 2, Ireland
 tel. 353 1 6614 566
 fax. 353 1 6614 622

<http://www.barcodehq.com>
 email. wds@barcodehq.com



LZ400RF RF Cordless Laser Scanner